

## **MECHANIZED HEDGE TRIMMING & MECHANICAL WEED CONTROL**



**EFFICIENT - RELIABLE - DURABLE**

## FOREWORD

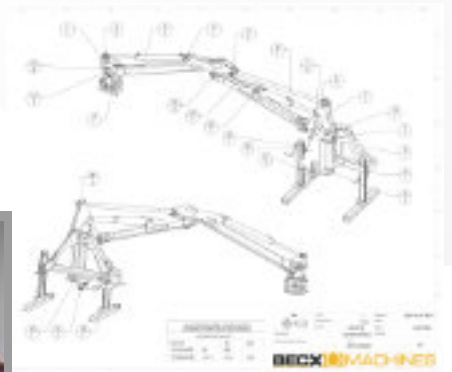
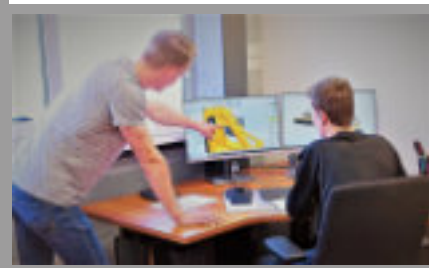
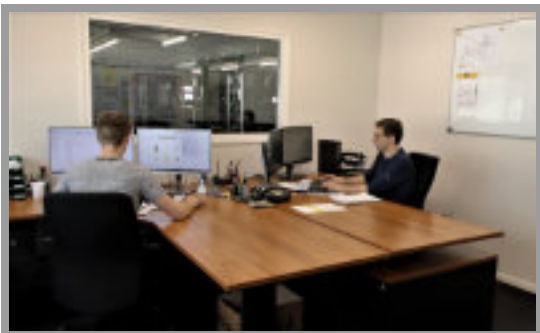
Thank you for your interest in the products of Becx Machines.

Our aim is to develop and produce sustainable machines that are perfectly in keeping with the needs of consumers. Machines that make your daily activities considerably easier and offer the reliable performance that users deserve. Functionality and high quality go hand in hand at Becx Machines. With over 12 years' experience in developing and building machines, we can guarantee that our products live up to every promise in this brochure. Best regards, Erwin Hommen



## IDEAS

All good products are based on good ideas. Becx Machines does its utmost to effectively convert such ideas into functional and durable machines. In the engineering department, ideas first become drawings; drawings then become prototypes; and prototypes become products after further development. These are EFFECTIVE products that Becx wholeheartedly believes in!



## PRODUCTION

Because Becx Machines believes in short lines of communication and the ability to respond quickly, Becx Machines prefers to keep production and product development activities in-house or very close to the company.

Due to short distances and short lines of communication, changes can be quickly implemented, produced items can be inspected efficiently and consistent quality and timely delivery can be guaranteed.



## WELDING COBOT

Our welders use a welding Cobot to guarantee consistent welding quality. The Cobot is used wherever possible. The accuracy of this machine is reflected in the quality of the welded components.



## ASSEMBLY



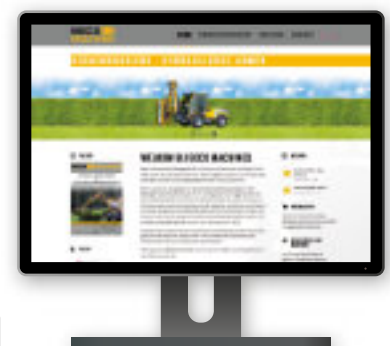
The machines are assembled, inspected and tested in our in-house workshop by experienced professionals who are passionate about their job.



## INFORMATION

Information is an essential factor in today's world. And Becx Machines understands the importance of providing good information. This brochure features basic details about all machines.

Besides this brochure, you can also visit [becxmachines.com](http://becxmachines.com). This website contains further information about each machine, as well as useful photos and videos.



# Contents

## HEDGE TRIMMERS

**HS75HR**



p. 4-5

**HS75ER**



p. 6-7

**HS130HR**



p. 8-9

**HS131HR**



p. 10-11

**HS131C**



p. 12-13

**HS150HR**



p. 14-15

**HS210HR**



p. 16-17

**HS240HR**



p. 18-19

## HYDRAULIC ARMS/ROTATORS

**MA270**



p. 20-21

**WLA60**



p. 22-23

**DRHS34**



p. 24-25

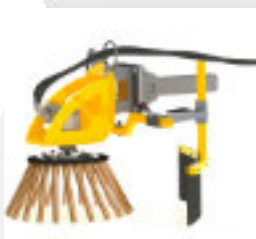
**DRHS55**



p. 26-27

## WEED BRUSHES/GRASS TRIMMERS

**OBA50**



p. 28-29

**OB90M**



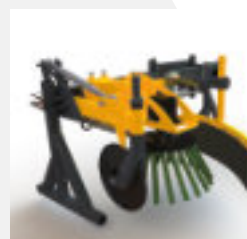
p. 30-31

**OB90**



p. 32-33

**OBKS50-35**



p. 34-35

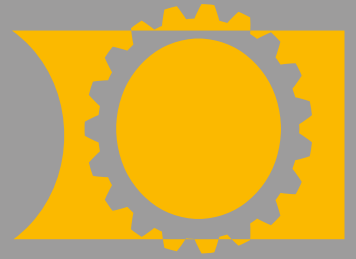
**OBKS90-45**



p. 36-37



# HS75HR



## A SINGLE PROCESS

The Becx HS75HR is the smallest machine in the hedge trimmer range of Becx Machines. This hedge trimmer has two trimmer heads and has been fully re-designed. Due to the limited dimensions and smaller components, the weight and required oil flow are very low. The HS75HR is therefore compatible with even the smallest of tractors. Of course, this trimmer also has all the features of our previous hedge trimmers.

## SAFE AND RELIABLE

Becx Machines raises the level of safety further with the HS75HR. Because the primary aim is a lightweight hedge trimmer, the hood and the frame had to be lighter. Extra safety is ensured by making the safety components of the hood from high-strength steel, which improves damage resistance by up to 4 times compared to regular steel. This helps to better guarantee safety.

## CAPACITY

Becx hedge trimmers are able to significantly reduce the size of hedges in a single work process, without making concessions in results. Noise levels are very low because the machine only uses hydro-motors and features no chains or V-belts. No concessions have been made with the two trimmer heads of the HS75HR either.

PATENTED



# HEDGE TRIMMER

## HS75HR

- Very safe thanks to sealed casing made from high-strength steel
- Reliable and cost-saving
- Good trimming results
- Low weight and low noise levels
- Compatible with almost all mowing arms

## SPECIFICATIONS

Working width:	77 cm
Trimming capacity:	up to 2.0 cm
Weight:	73 kg
Fixing sleeve:	80 x 80 mm
Maximum revolutions:	3000 rpm
Required connections:	Pressure - Return - Drain lines (pressure-free)
Required oil supply:	circa 24 l/min (featuring 8cc motor as standard)
Min. - Max. oil pressure:	180 - 210 bar

## OPTIONS

- Flow regulator for controlling volume flow

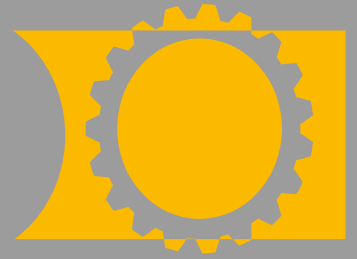
The standard HS75HR will be supplied with 110 cm hoses featuring agricultural couplings.



See the HS75HR in action at [www.becxmachines.com](http://www.becxmachines.com)



# HS75ER



## ELECTRIC WITHOUT CONCESSIONS

The Becx HS75ER is the latest machine in the hedge trimmer range of Becx Machines. This hedge trimmer represents a further development of the existing HS75HR. Because hydraulic motors have been replaced by 48-volt electric motors, it is now possible to trim hedges while releasing zero emissions. This trimmer, which is powered by electric motors, possesses exactly the same qualities as our regular hedge trimmers.

## SAFE AND FAMILIAR

The HS75ER consists of the same high-grade materials and components and, apart from using electric motors, is exactly the same as the HS75HR machines. This means it is possible to convert existing hydraulic HS75HR machines into electrically-driven versions or vice versa.

## CAPACITY

Thanks to two electric motors that offer two kilowatts per motor, the HS75ER has the same capacity as the hydraulic version.

PATENTED





# HEDGE TRIMMER

## HS75ER

- Very safe thanks to sealed casing made from high-strength steel
- Reliable and cost-saving
- Good trimming results
- Low weight and low noise levels
- Compatible with almost all mowing arms

## SPECIFICATIONS

Working width:	77 cm
Trimming capacity:	up to 2.0 cm
Weight:	77 kg
Fixing sleeve:	80 x 80 mm
Maximum revolutions:	3000 rpm
Required connections:	48 volt

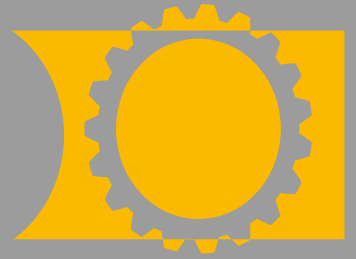
## OPTIONS



See the HS75ER in action at [www.becxmachines.com](http://www.becxmachines.com)



# HS130HR



## A SINGLE PROCESS

The Becx HS130HR hedge trimmer has been specially developed for professional hedge trimming in a single work process. Trimmed material is cut into fine pieces by the double blade (inside the sealed casing) and inserted back into the hedge. This helps to minimize the clean-up and disposal of hedge trimmings. Becx Machines' patented cutting system ensures the very highest trimming quality.

## SAFE AND RELIABLE

Thanks to its sealed casing, the HS130HR is deemed to be extremely safe. The casing helps to prevent trimmings from scattering.

Downtime is kept to a minimum thanks to the use of high quality materials, effective construction and direct transmission based on strong hydro-motors. The machine is also very easy and cheap to maintain.

## CAPACITY

Becx hedge trimmers are able to significantly reduce the size of hedges in a single work process, without making concessions in results. The machine produces very little noise because it only uses hydro-motors and features no chains or V-belts.

PATENTED



# HEDGE TRIMMER

## HS130HR

- Safe thanks to sealed casing
- Reliable
- Cost-effective
- Perfect trimming results
- Large capacity
- Low noise levels
- Compatible with almost all mowing arms

## SPECIFICATIONS

Working width:	127 cm
Trimming capacity:	up to 2.5 cm
Weight:	134 kg
Fixing sleeve:	80 x 80 mm
Maximum revolutions:	2500 rpm
Required connections:	Pressure - Return - Drain lines (pressure-free)
Required oil supply:	circa 30 l/min (featuring 11cc motor as standard)
Min. - Max. oil pressure:	180 - 210 bar

A standard HS130HR will be supplied with 110 cm hoses featuring agricultural couplings.

## OPTIONS

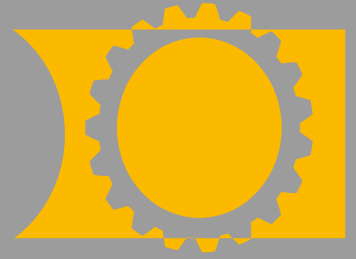
- 16cc motor (circa 45 l/min required)
- Flow regulator for controlling volume flow



See the HS130HR in action at [www.becxmachines.com](http://www.becxmachines.com)



# HS131HR



## DEVELOPMENT

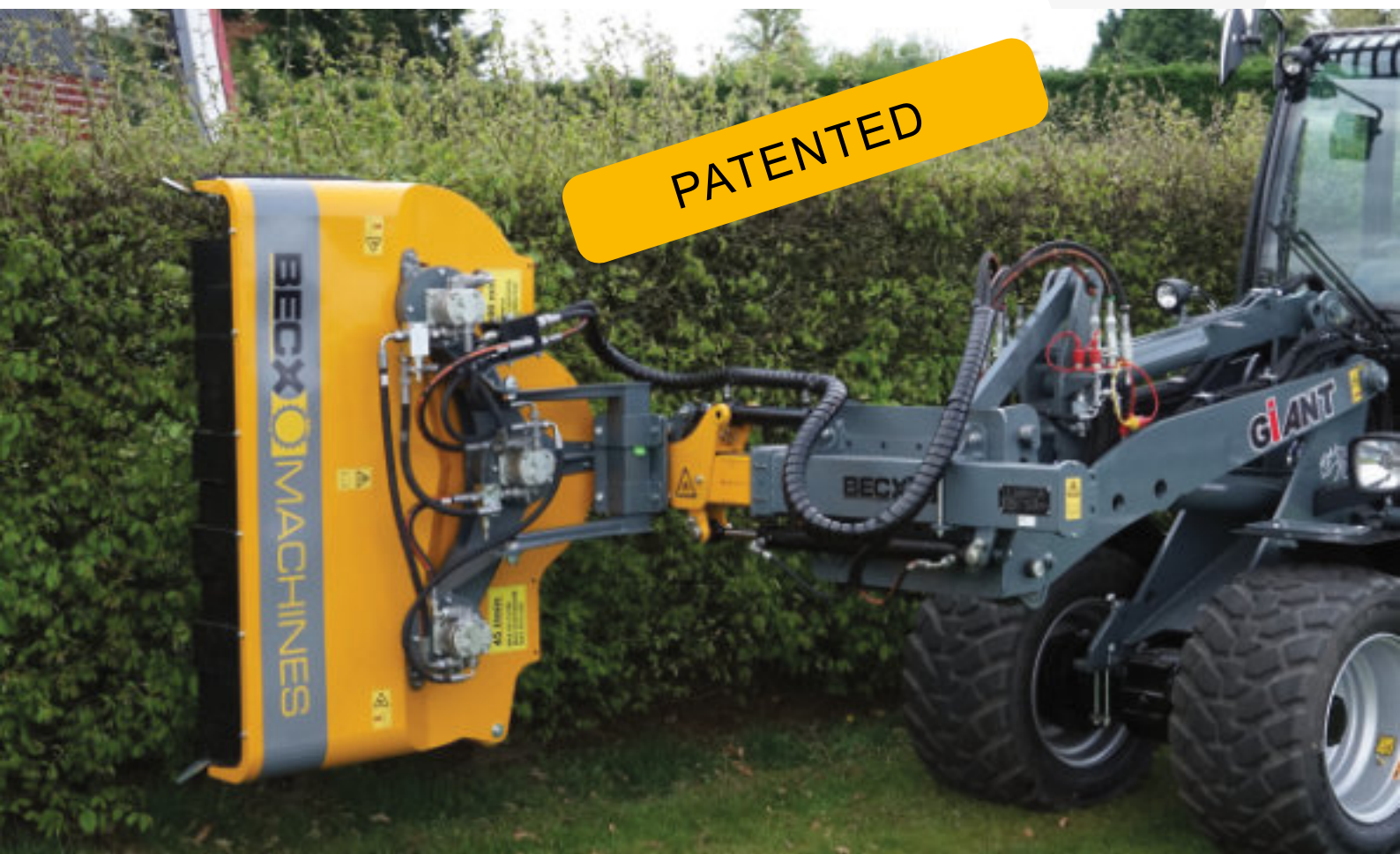
By listening to customers and people's experiences with the HS130HR and HS150HR, we have taken hedge trimming a level higher with this machine. The machine's capacity is slightly higher than the HS130HR. The machine is even better at mulching, discards even less trimmed material and has a more robust casing.

## FUNCTIONAL

The HS131HR features a guide roller as standard. This roller makes vertical hedge trimming easier and reduces wear and tear/damage to the hood.

## SAFE AND FAMILIAR

The HS131HR hedge trimmer is essentially just as reliable as the HS130HR. It is still based on the same reliable hydro-motors and bearing housings. A number of new properties have been added to these familiar basic elements. For instance, the standard HS131HR features some hydraulic safety elements and the blade heads are even easier to maintain.



# HEDGE TRIMMER

## HS131HR

- Very safe thanks to sealed casing
- Reliable
- Cost-effective
- Perfect trimming results
- Large capacity
- Low noise levels
- Compatible with almost all mowing arms

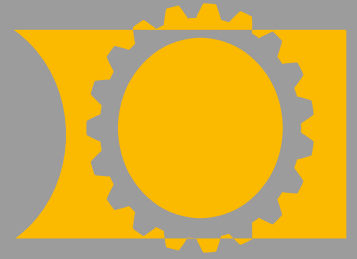
## SPECIFICATIONS

Type:	HS131HR
Working width:	131 cm
Trimming capacity:	up to 3 cm
Weight:	159 kg
Fixing sleeve:	80 x 80 mm
Maximum revolutions:	2500 rpm
Required connections:	Pressure - Return - Drain lines (pressure-free)
Required oil supply:	circa 45 l/min (only available with 16cc motor)
Min. - Max. oil pressure:	180 - 210 bar

The standard HS131HR will be supplied with 110 cm hoses featuring agricultural couplings.



# HS131C



## FURTHER DEVELOPMENT

The HS131C is a further development of the HS131HR. Due to changes in the casing and the blade, it is now possible to collect the trimmed waste in an extraction container.

## MULTIFUNCTIONAL

All HS131HR trimmers supplied since 2019 can be converted into a trimmer with collection possibilities. All HS131C trimmers supplied since 2019 can be converted into a standard mulching machine.

## SAFE AND FAMILIAR

When constructing an HS131C, exactly the same familiar components are used as for the HS131HR.

PATENTED



# HEDGE TRIMMER

Suitable for collecting trimmed waste

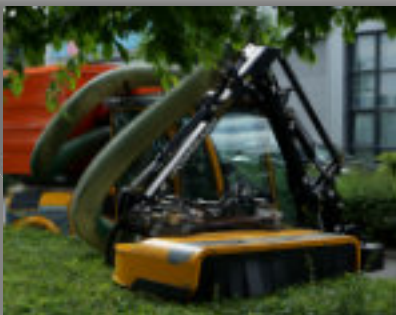
## HS131C

- Very safe thanks to sealed casing
- Reliable
- Cost-effective
- Perfect trimming results
- Large capacity
- Low noise levels
- Compatible with almost all mowing arms

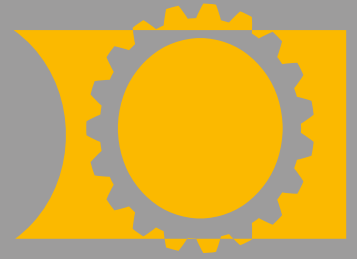
## SPECIFICATIONS

Type:	HS131C
Working width:	131 cm
Trimming capacity:	up to 2 cm
Weight:	159 kg
Fixing sleeve:	80 x 80 mm
Maximum revolutions:	2500 rpm
Required connections:	Pressure - Return - Drain lines (pressure-free)
Required oil supply:	circa 45 l/min (only available with 16cc motor)
Min. - Max. oil pressure:	180 - 210 bar

The standard HS131C will be supplied with 110 cm hoses featuring agricultural couplings.



# HS150HR



## LARGER

The Becx HS150HR is one of the largest machines in the Becx range of hedge trimmers. The trimming width has increased, as has the trimming capacity. The standard casing is very robust, which means an extra buffer is not needed when attached to e.g. an excavator.

## SOLID BASIS

The HS150HR has remained loyal to the basic principles of Beck Machines' hedge trimmers. Three motors, three trimmer heads with four double blades and the patented blade configuration.

This helps to safeguard reliability as well as trimming quality. The casing design is robust, effectively reduces the size of the material and is very safe.

## VERSATILE

Due to its powerful trimming mechanism, the HS150HR can be flexibly used for a variety of hedges and ground coverings. Due to the high intake, hedges can be significantly reduced in size in a single work process. The HS150HR is ideal for heavy duty work. Large tractors and/or excavators (with double rotator DRHS55) are ideal machines for carrying the HS150HR.

PATENTED





# HEDGE TRIMMER

## HS150HR

- Safe thanks to sealed casing
- Reliable
- Cost-effective
- Perfect trimming results
- Very robust
- Extra large capacity
- Low noise levels
- Compatible with almost all mowing arms

## SPECIFICATIONS

Type:	HS150HR
Working width:	150 cm
Trimming capacity:	up to 3.5 cm
Dead weight:	198 kg
Fixing sleeve:	80 x 80 mm
Maximum revolutions:	2000 rpm
Required oil supply:	circa 45 l/min (only available with 22cc motor)
Min. - Max. oil pressure:	180 - 210 bar

## OPTIONS

- Flow regulator for controlling volume flow
- Assembly clamp for mounting at rear end

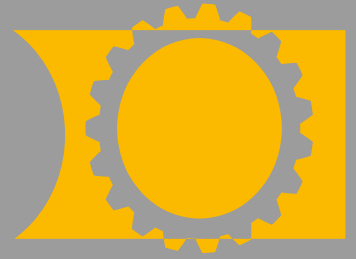
The HS150HR is supplied with agricultural couplings as standard.



See the HS150HR in action at [www.becxmachines.com](http://www.becxmachines.com)



# HS210HR



## LARGE

The Becx HS210HR is the second largest machine in the hedge trimmer range of Becx Machines. This hedge trimmer with 5 trimmer heads is based on the HS131HR and therefore has all the advantages of the previous models. The standard casing is extremely robust, so there is no need for an extra protection buffer when it is attached to a crane, for example.

## SAFE AND RELIABLE

The sealed casing of the HS130HR is exceedingly safe. The casing helps to prevent trimmings from scattering. Downtime is kept to a minimum thanks to the use of high-strength steel, a solid construction and direct drive by top-quality hydro-motors. The machine is also very easy and cheap to maintain.

## CAPACITY

Becx hedge trimmers are able to significantly reduce the size of hedges in a single work process, without making concessions in results. Noise levels are very low because the machine only uses hydro-motors and features no chains or V-belts. Furthermore, this machine is designed to cover a lot of distance. Many hedges can be trimmed in one go thanks to the 210-cm working width.

PATENTED



# HEDGE TRIMMER

## HS210HR

- Very safe thanks to sealed casing made from high-strength steel
- Reliable and cost-saving
- Perfect trimming results
- Extra large capacity and working width
- Low noise levels
- Compatible with almost all mowing arms

## SPECIFICATIONS

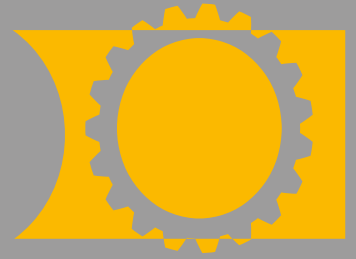
Type:	HS210HR
Working width:	211 cm
Trimming capacity:	up to 3 cm
Dead weight:	269 kg
Fixing sleeve:	80 x 80 mm
Maximum revolutions:	2500 rpm
Required oil supply:	circa 90 l/min (featuring 16cc motor as standard)
Min. - Max. oil pressure:	180 - 210 bar



See the HS210HR in action at [www.becxmachines.com](http://www.becxmachines.com)



# HS240HR



## LARGEST

The Becx HS240HR is the largest machine in the hedge trimmer range of Becx Machines. This hedge trimmer with 5 trimmer heads is based on the HS150HR and therefore has all the advantages of the previous models. The standard casing is extremely robust, so there is no need for an extra protection buffer when it is attached to a crane, for example.

## SAFE AND RELIABLE

The sealed casing of the HS240HR is exceedingly safe. The casing helps to prevent trimmings from scattering. Downtime is kept to a minimum thanks to the use of high-strength steel, a solid construction and direct drive by top-quality hydro-motors. The machine is also very easy and cheap to maintain.

## CAPACITY

Becx hedge trimmers are able to significantly reduce the size of hedges in a single work process, without making concessions in results. Noise levels are very low because the machine only uses hydro-motors and features no chains or V-belts. Furthermore, this machine is designed to cover a lot of distance. Many hedges can be trimmed in one go thanks to the 240-cm working width.

PATENTED



Display of HS210HR

# HEDGE TRIMMER

## HS240HR

- Very safe thanks to sealed casing made from high-strength steel
- Reliable and cost-saving
- Perfect trimming results
- Extra large capacity and working width
- Low noise levels
- Compatible with almost all mowing arms

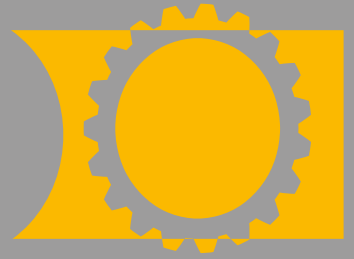
## SPECIFICATIONS

Type:	HS240HR
Working width:	240 cm
Trimming capacity:	up to 3.5 cm
Dead weight:	365 kg
Fixing sleeve:	80 x 80 mm
Maximum revolutions:	2000 rpm
Required oil supply:	circa 90 l/min (featuring 22cc motor as standard)
Min. - Max. oil pressure:	180 - 210 bar



See the HS240HR in action at [www.becxmachines.com](http://www.becxmachines.com)





## VERSATILE

Mechanical trimming pays dividends! However, you need the right tools.

Naturally, you can rely on the hedge trimmers of Becx Machines. In order to effectively use these trimmers, Becx Machines has also developed its own mowing arms.

The MA270 is a mowing arm with a reach of 270 cm and can be mounted on the left- and right-hand side of the carrying vehicle. The MA270 arm is hydraulically adjustable.

The tool coupling is rotated manually on the standard version but can be fitted with a hydraulic swivel unit. A 'fixed'-head version is also available, which makes it easier to trim the reverse side of hedges.

## COMPACT

Whichever version is selected, the MA270M offers high freedom of movement. The machine has also been constructed as light and compact as possible, without making concessions in quality. The machine makes it possible to work at a height of 270 cm, also when very close to the machine.

This is one of the characteristics that make the machine so unique! The arm can be rotated 180° degrees, which makes it possible to trim all edges and sides of the hedge with a single machine combination.



# HEDGE TRIMMING ARM

## MA270

- Rotation 180 degrees
- Choice of tool-coupling movement (fixed, manual or hydraulic)
- High freedom of movement
- Very stable
- Easy to maintain
- Parallel operated arm
- Hydraulic drive security

## SPECIFICATIONS

Range from center:	40 - 270 cm
Dead weight:	345 kg
Maximum tool weight:	180 kg
Arm rotation:	180° degrees
Drive security:	hydraulic
Coupling MA270M:	3-point Cat II
Required double hydraulic functions:	3
Required 12v switch conn:	1
Tool coupling: 80x80 mm:	180° degrees manual rotation
Min. - Max. oil pressure:	180 - 250 bar

## OPTIONS

- Trimmer/tool coupling hydraulic rotation
- Fixed trimmer/tool coupling; can be tilted by 230° degrees

Take note: A separate continuous volume flow will be needed to power your trimmer/tool.



See the MA270 in action at [www.becxmachines.com](http://www.becxmachines.com)





## WHEEL LOADER

From now on, you will be able to use your wheel loader for a wider range of purposes thanks to the WLA60. This trimming arm makes it possible to assemble Becx hedge trimmers on your loader. The WLA60 has been designed to make it compatible with almost all wheel loaders. Becx Machines offers an option with valves and control panel if your wheel loader does not feature the required double hydraulic valves. The hedge trimmer in the image is not included.

## FUNCTIONS

The WLA60 can be extended by 60 cm and tilted by 105 degrees. The arm can be mounted on the left or right, and on the back or front. When used together with your wheel loader's lifting function, it allows you to trim a wide range of hedges. The WLA60 is able to carry the HS75HR, HS130HR and HS131HR.





# TRIMMING ARM FOR WHEEL LOADER

## WLA60

- Trim hedges with your wheel loader/loader
- Make your wheel loader/loader even more versatile
- Available with valve block and control panel
- Easy to maintain
- Compatible with almost all wheel loaders/loaders
- Easy assembly and disassembly
- Hedge trimmer not included!

## SPECIFICATIONS

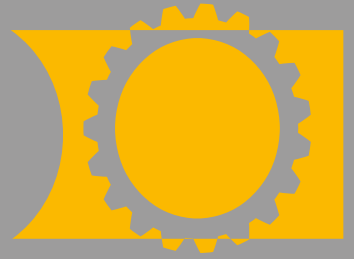
Type:	WLA60
Extension width:	60 cm
Tilt angle:	105° degrees
Dead weight:	100 kg
Tool clamp:	80 x 80 mm
Maximum tool weight:	170 kg
Required double hydraulic functions:	2
Min. - Max. oil pressure:	140 - 250 bar

Take note: A separate continuous volume flow will be needed to power your trimmer/tool. The WLA60 will be supplied with hoses to the attachment plate as standard.



See the WLA60 in action at [www.becxmachines.com](http://www.becxmachines.com)



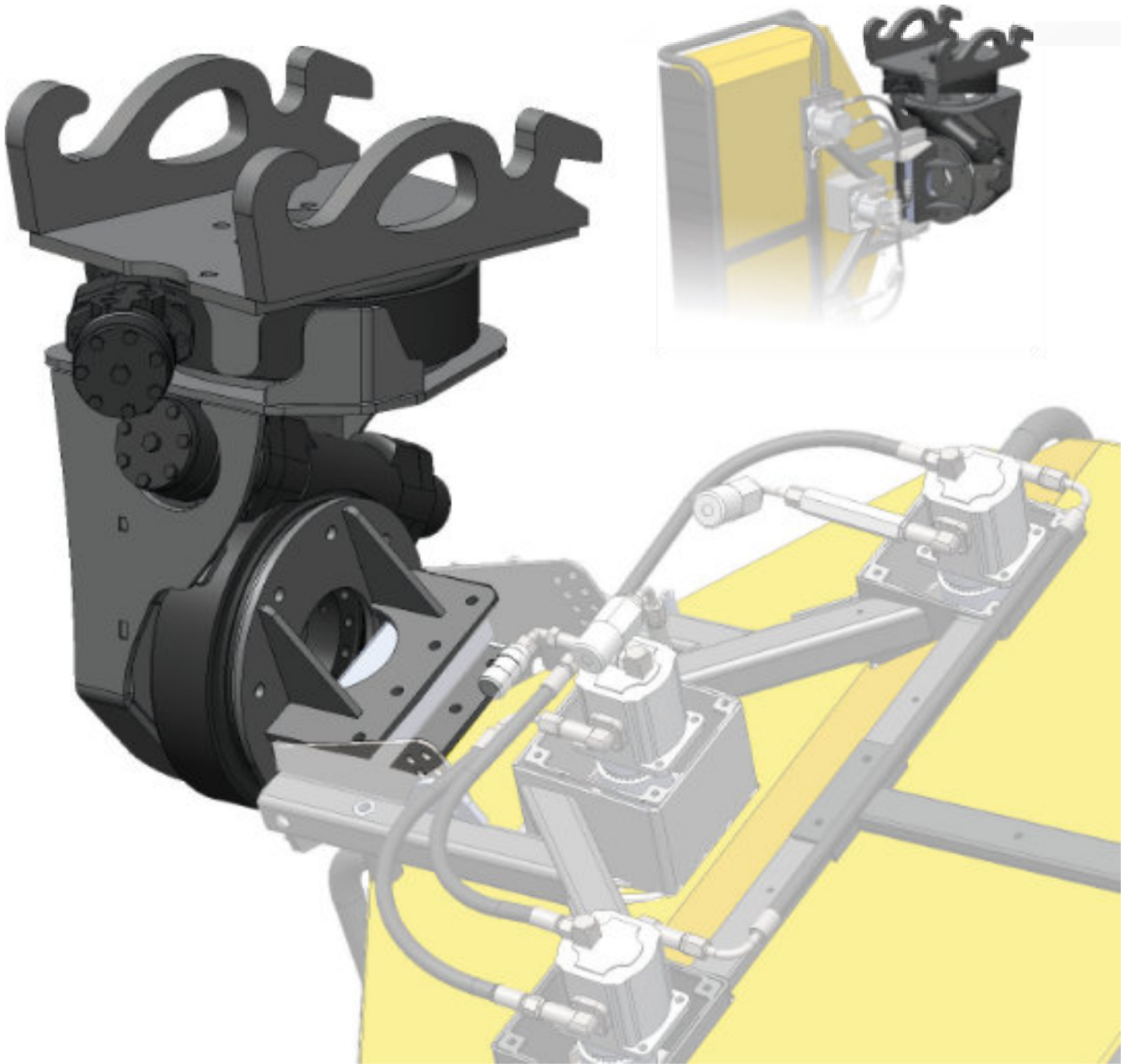


## MINI EXCAVATOR

Mini and midi cranes/excavators are increasingly being used for professional trimming activities. Bexx Machines has developed the DRHS34 especially for this purpose. This double rotator unit features a universal CW5 quick-release connection. The rotator unit can also be fitted with other versions.

## FREEDOM OF MOVEMENT

The DRHS34 is suitable for hedge trimmers and other tools with a maximum weight of 200 kg. By using two hydraulic swivel units, it is possible to rotate 180 degrees horizontally and vertically. The coupling point for tools is a clamp connection for shafts measuring 80x80 mm.



# DOUBLE ROTATOR UNIT FOR HEDGE TRIMMER

## DRHS34

- Hedge trimming with (mini) excavators
- High freedom of movement
- Very stable
- Easy to maintain
- CW5 quick-action coupling (standard)

## SPECIFICATIONS

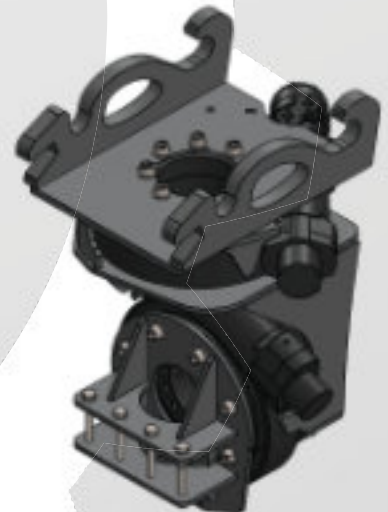
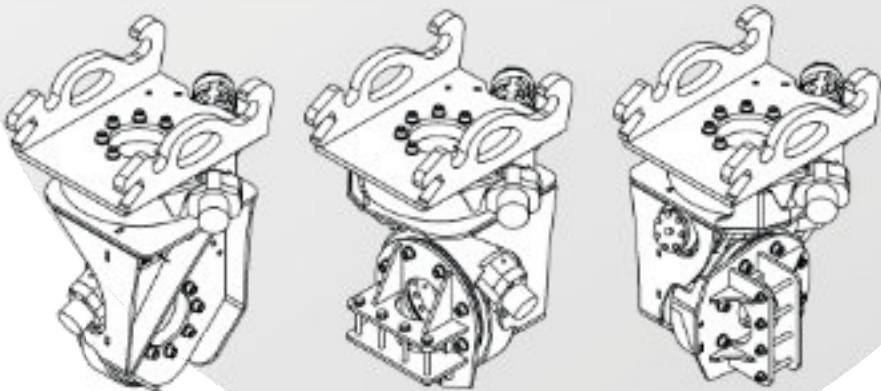
Type:	DRHS34
Height in relation to coupling:	34 cm
Tilt angle (horizontal/vertical):	180° degrees
Dead weight:	102 kg
Maximum tool weight:	200 kg
Tool clamp:	80 x 80 mm
Required double hydraulic functions:	2

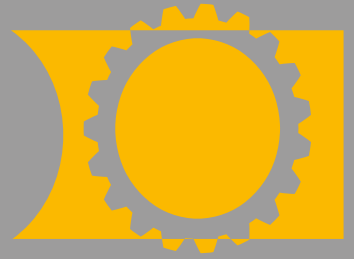
Take note: A separate continuous volume flow will be needed to power your trimmer/tool.  
The DRHS34 is delivered without hoses and couplings.

## OPTIONS



See the DRHS34 in action at [www.becxmachines.com](http://www.becxmachines.com)



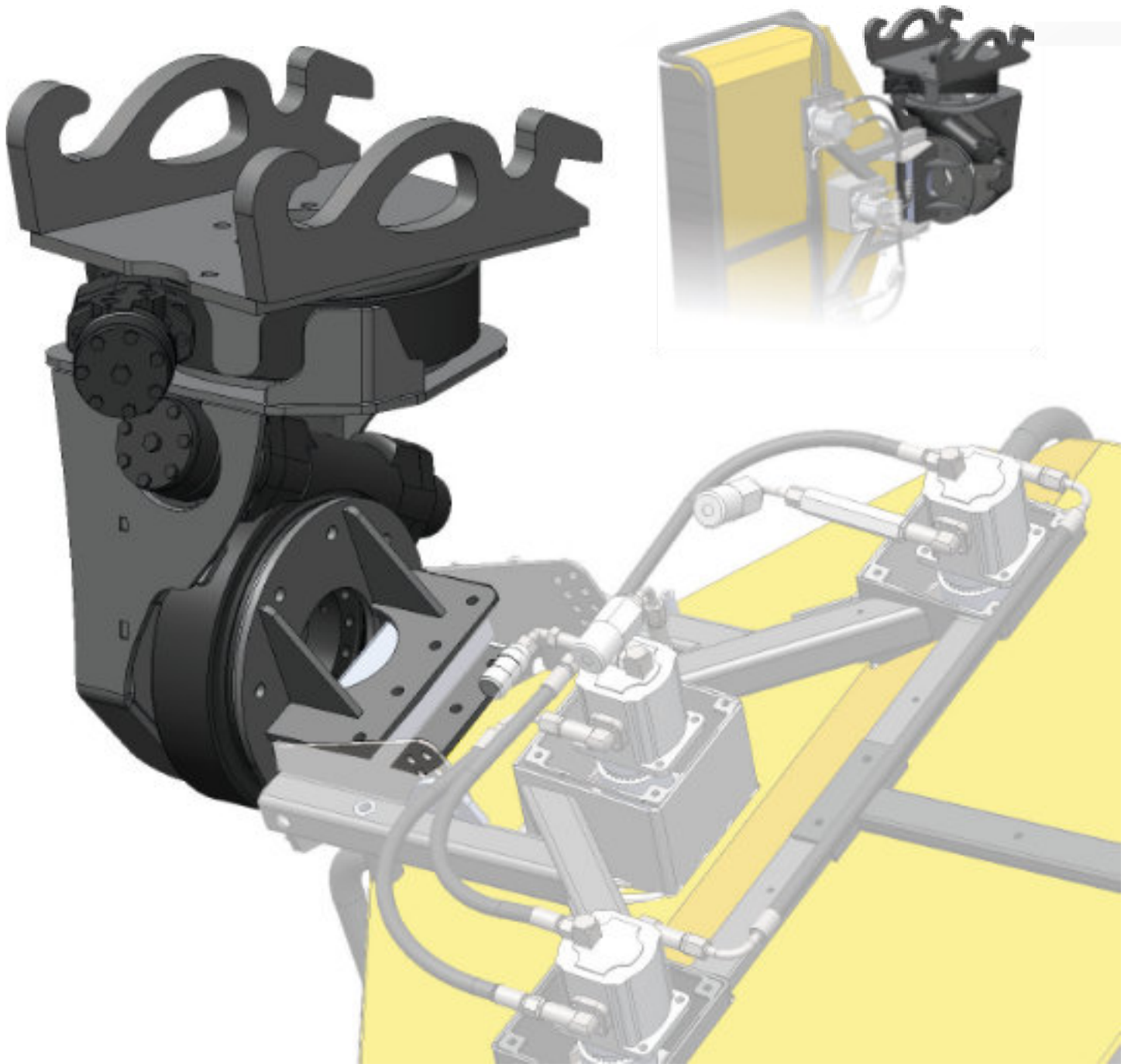


## MIDI EXCAVATOR

Mini cranes/excavators are increasingly being used for professional trimming activities. Becx has developed the DRHS55 especially for this purpose. This double rotator unit features a universal CW10 quick-release connection. The rotator unit can also be fitted with the CW20 or CW30.

## FREEDOM OF MOVEMENT

The DRHS55 is compatible with all Becx hedge trimmers. By using two hydraulic swivel units, it is possible to rotate 180 degrees horizontally and vertically. The connection point for trimmers is a clamp coupling with standard dimensions of 80x80 mm.



# DOUBLE ROTATOR UNIT FOR HEDGE TRIMMER

## DRHS55

- Hedge trimming with (mini) excavators
- High freedom of movement
- Very stable
- Easy to maintain
- CW10 quick-action coupling

## SPECIFICATIONS

Type:	DRHS55
Height in relation to coupling:	55 cm
Tilt angle (horizontal/vertical):	180° degrees
Dead weight:	185 kg
Maximum tool weight:	450 kg
Tool clamp:	80 x 80 mm
Required double hydraulic functions:	2

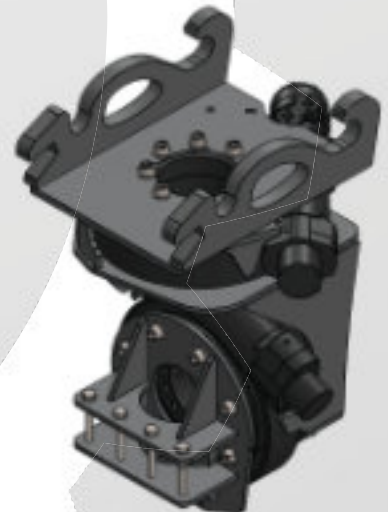
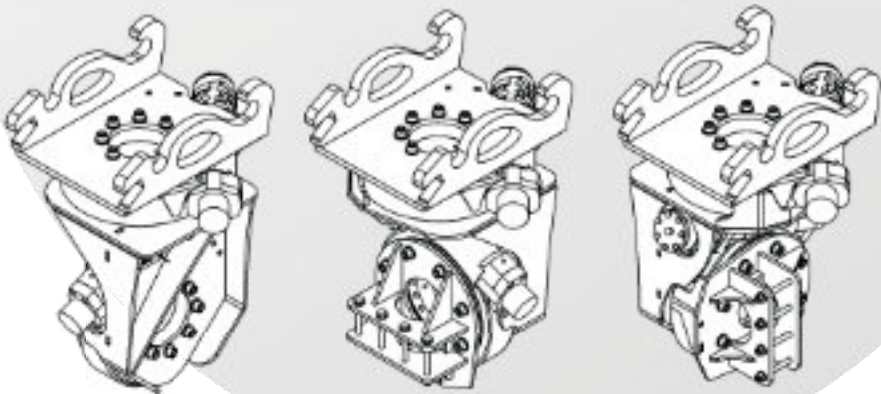
## OPTIONS

CW20 or CW30 coupling plate

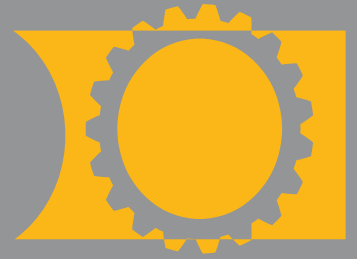
Take note: A separate continuous volume flow will be needed to power your trimmer / tool. The DRHS55 is delivered without hoses and couplings.



See the DRHS55 in action at [www.becxmachines.com](http://www.becxmachines.com)



# OBA50



## ALL-ROUNDER

The A in the type designation stands for arm. And this refers to an arm that is normally used to trim hedges or to mow verges and the edges of ditches.

The OBA50 is highly compatible with the MA270 by Becx Machines. By using the arm's freedom of movement, it is also possible to access places that cannot be reached with a standard brushing machine. For instance, embankments under viaducts, traffic islands and other inaccessible or difficult-to-access places.

## RELIABLE

Using high-quality materials and components, we have succeeded again in developing a reliable machine. We have made no concessions in functionality and quality, and have created a machine that can be used for many years.



# WEED BRUSH OBA50

## OBA50

- Minimum damage to surfaces thanks to a brush with many stands
- Very low noise levels
- Brush arm mechanically adjustable
- Can be mounted on almost all mowing arm brands.

## SPECIFICATIONS

Type:	OBA50
Brush diameter:	50 cm
Weight:	105 kg
Required oil supply:	20 - 60 l/m.
Min. - Max. Oil pressure:	180 -250 bar

The OBA50 is supplied without hoses as standard.

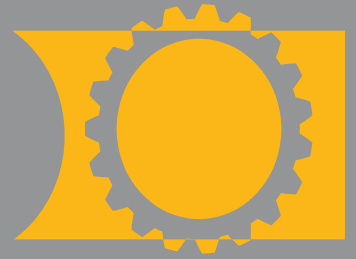
## OPTIONS

- The machine is also available with synthetic sweeper
- The machine is also available with 90 cm weed brush



See the OBA50 in action at [www.becxmachines.com](http://www.becxmachines.com)





## MANUAL

The M in OB90M stands for manual. The clever construction allows the user to adjust the OB90M fully to his wishes and requirements.

Thanks to a swivel reach of 180 degrees, the machine can be used across a great range. The angle of the head can be tilted with respect to the paved surface. No hydraulic swivel options are used, so the carrier only requires a hydraulic pressure and return connection.

## MULTIFUNCTIONAL

The M in OB90M can also be understood to mean multifunctional, because that is certainly a good way to describe this machine.

The clever design of the brush head allows a sweeper to be mounted on the machine easily. The 360-degree rotating brush head can even be used to sweep gutters. Nothing prevents you from using this machine on all types of terrain.

## RELIABLE

Using high-quality materials and components, we have succeeded again in developing a reliable machine. We have made no concessions in functionality and quality, and have created a machine that can be used for many years.





# WEED BRUSH 90M

## OB90M

- Minimum damage to surface due to use of large brush
- Very low noise levels
- Brush arm manually adjustable in all directions
- Can be mounted on almost all wheel loader, tractor or tool carrier brands.

## SPECIFICATIONS

Type:	OB90M
Brush diameter:	90 cm
Weight:	152 kg
Required oil supply:	20 - 60 l/m.
Min. - Max. Oil pressure:	180 -250 bar

The OB90M is supplied with hoses to the attachment plate as standard.

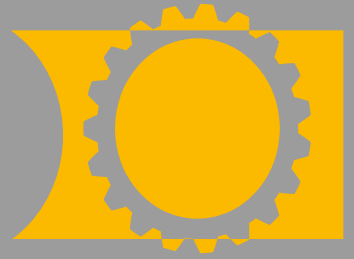
## OPTIONS

- The machine is also available with synthetic sweeper



See the OB90M in action at [www.becxmachines.com](http://www.becxmachines.com)





## FULLY HYDRAULIC

The OB90 is an ideal choice for users who cover a lot of cleaning meters every day. All configuration possibilities are controlled hydraulically, which allows the operator to easily reach all sides and corners without losing time.

The brush arm has a large reach and can be swiveled from left to right. The head can be tilted backwards and forwards, and from left to right. This allows the operator to position the brush exactly where necessary!

The OB90 is also available with hydraulically adjustable edge trimmers. Conversion is always possible if you later decide to use your machine to trim edges.

(see page 30-31; OBKS90-45)

## SURROUNDINGS

Unlike many weed control machines, the OB90 does not use toxic substances or extra diesel when boiling water.

The OB90 operates via the hydraulics of the tool carrier and is thus a perfect future-oriented solution when it comes to large-scale, sustainable and safe weed control. An extra large weed brush, with many bristles, has been developed to prevent damage to brushed surfaces. This brush offers excellent results at low revs!



# WEED BRUSH 90

## OB90

- Minimum damage to surface due to use of large brush
- Very low noise levels
- Brush arm hydraulically adjustable in all directions
- Can be mounted on almost all tool-carrier, tractor or loader brands

## SPECIFICATIONS

Brush diameter:	90 cm
Weight:	200kg
Required oil flow brush:	20 -60 l/m
Required double hydraulic functions:	3
Min. - Max. oil pressure:	180 - 250 bar

The OB90 will be supplied with hoses to the attachment plate as standard.

## OPTIONS

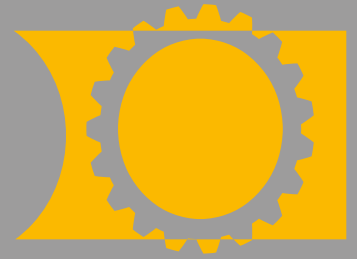
- Machine can also be fitted with a blade, see pages 36-37; OBKS90-45



See the OB90 in action at [www.becxmachines.com](http://www.becxmachines.com)



# OBKS50-35



## INTELLIGENT DESIGN

The weed brush/edge trimming machines of Becx Machines make it possible to brush surfaces and trim grass in a single work process. The standard OBKS50-35 has a brush diameter of 50 cm and a trimming diameter of 35 cm. A standard machine allows the working width to be mechanically adjusted, as well as the height of edge-trimming blades in relation to the brush. The angle of the brush can also be mechanically adjusted.

## HYDRAULIC OPTIONS

The working width and the height of the blade can be adjusted hydraulically. These options can easily be added to your machine at a later time. If your machine does not have enough double hydraulic functions, the machine can be fitted with hydraulic valves and an accompanying control.

## COST EFFICIENT

The machine's intelligent design keeps production costs to a minimum, which pays off in the initial purchase price. Without making concessions in quality or functionality, Becx offers you a fantastic, complete machine with great performance for a great price.



# WEED BRUSH EDGE TRIMMER 50-35

## OBKS50-35

- Brushing and edge trimming in a single work process
- Both mechanical and hydraulic controls
- Very competitive price, without concessions in quality
- Spring-mounted overload switch on the blade
- Compatible with almost all tool carriers, tractors or loaders
- Hydraulically-driven brush

## SPECIFICATIONS

Type:	OBKS50-35
Brush diameter:	50cm
Blade diameter:	35cm
Weight:	170 kg
Required oil supply:	20 - 60 l/min
Min. - Max. oil pressure:	180 - 250 bar

## OPTIONS

- Hydraulic configuration working width
- Hydraulic configuration blade height
- Swiveling brush head

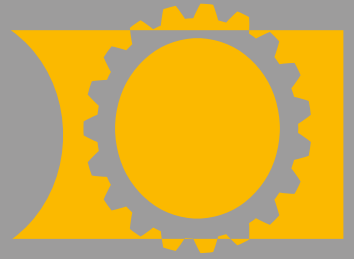
The OBKS50-35 will be supplied with hoses to the attachment plate as standard.



See the OBKS50-35 in action at [www.becxmachines.com](http://www.becxmachines.com)



# OBKS90-45



## FULLY HYDRAULIC

The OBKS90-45 is a superb, complete machine for professional users. The operator can control all rotation and swivel functions from his cabin. This range of configuration possibilities improves the number of meters that can be brushed and cut each day. Because the brush and blade can be configured from inside the cabin, this machine is able to trim most grass verges and brush most surfaces! It is also possible to fully withdraw the blade, thus allowing only brushing activities to be carried out.

## SURROUNDINGS

Unlike many weed control machines, the OBKS90-45 does not use toxic substances or extra diesel when boiling water. The OBKS90-45 works via the hydraulics of the tool carrier and is thus a perfect future-oriented solution when it comes to large-scale, sustainable and safe weed control.. An extra large weed brush, with many bristles, has been developed to prevent damage to brushed surfaces. This brush offers excellent results at low revs!

## BLADE

Both the height and width of the trimming arm can be adjusted. Both settings feature pressure-regulated valves, which prevent the blade from moving into unwanted positions. The blade controls also feature two accumulators that allow the blade to deviate if excessive pressure is encountered. A clearly visible pressure meter allows the operator to keep a close eye on the pressure.



# WEED BRUSH EDGE TRIMMER 90-45

## OBKS90-45

- Cost-efficient for customers due to the combined trimming and brushing process
- Minimum damage to surface due to use of large brush
- Very low noise levels
- Brush arm hydraulically adjustable in all directions
- Blade hydraulically adjustable in height and width
- Blade arm features hydraulic pressure-regulated valves
- Blade features lateral overload switch
- Suitable as weed brush when blade withdrawn
- Can be mounted on almost all tool-carrier, tractor or loader brands

## SPECIFICATIONS

Brush diameter:	90cm
Blade diameter:	45cm
Required oil supply brush:	20- 60 l/m
Required double hydraulic functions:	3
Required 12 volt. conn.:	2
Min. - Max. oil pressure:	180-250 bar
Weight:	230 kg

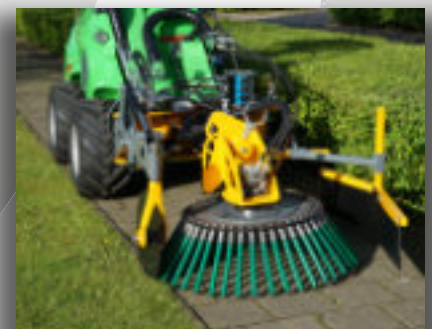
The OBKS90-45 will be supplied with hoses to the attachment plate as standard.

## OPTIONS

- Machine is also available without edge trimmer; see OB90



See the OBKS90-45 in action at [www.becxmachines.com](http://www.becxmachines.com)



---

---

---

---

---

---

---

---

---

---



[youtube.com/becxmachines](https://www.youtube.com/becxmachines)  
[facebook.com/becxmachines](https://www.facebook.com/becxmachines)  
[linkedin.com/becxmachines](https://www.linkedin.com/becxmachines)  
[instagram.com/becxmachines](https://www.instagram.com/becxmachines)

Contact via your dealer:

Becx Machines B.V.  
De Sonman 35  
5066 GJ Moergestel  
Netherlands  
[www.becxmachines.com](http://www.becxmachines.com)  
[info@becxmachines.com](mailto:info@becxmachines.com)  
tel: +31 (0) 13 207 0760